

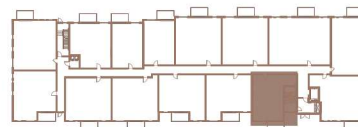
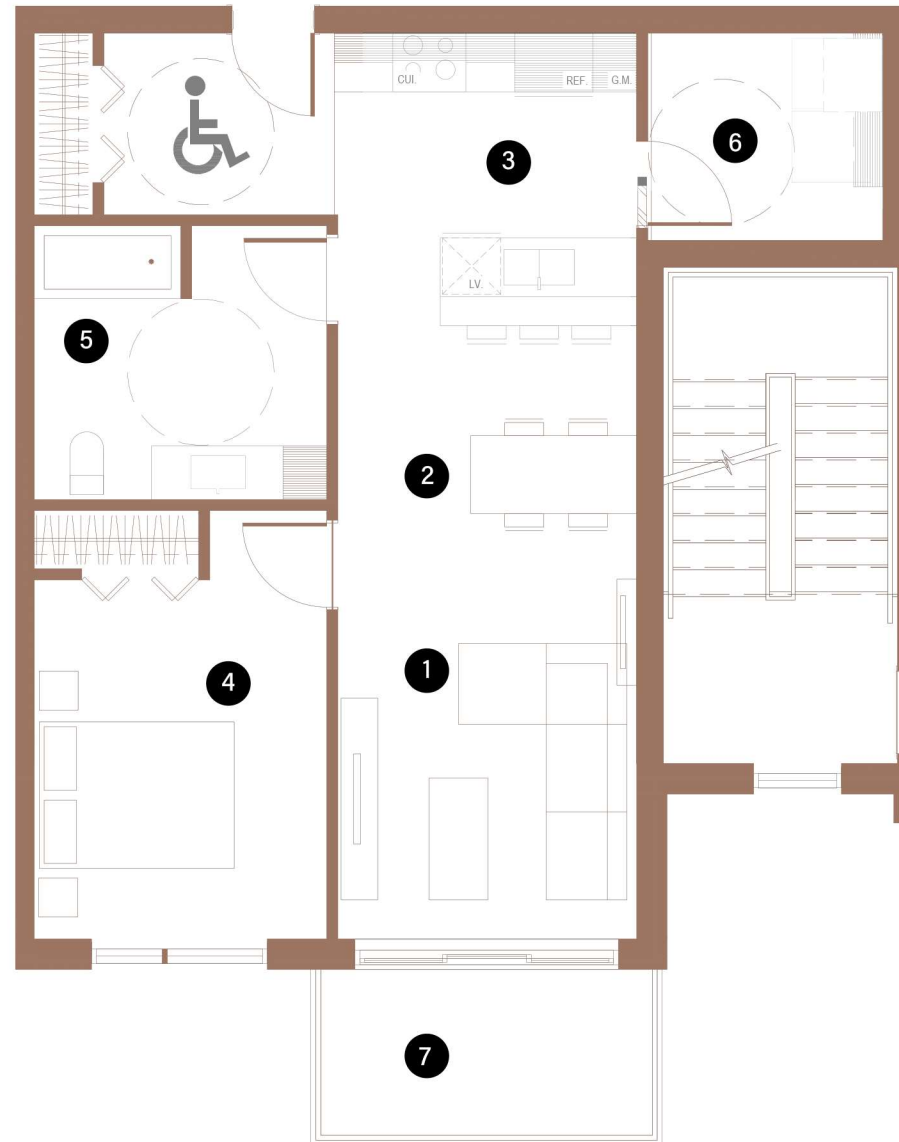
BUILDING 2

315

1 CHAMBRE | 1 SALLE DE BAINS | 700 PI<sup>2</sup>

1 BEDROOM | 1 BATHROOM | 700 FT<sup>2</sup>

- |   |                                 |                  |
|---|---------------------------------|------------------|
| 1 | SALON / LIVING ROOM             | 10'-3" X 11'-10" |
| 2 | SALLE À MANGER / DINING ROOM    | 10'-3" X 10'-10" |
| 3 | CUISINE / KITCHEN               | 10'-4" X 10'-0"  |
| 4 | CHAMBRE À COUCHER 1 / BEDROOM 1 | 10'-0" X 12'-3"  |
| 5 | SALLE DE BAINS / BATHROOM       | 10'-0" X 9'-4"   |
| 6 | BUANDERIE / LAUNDRY ROOM        | 8'-1" X 7'-1"    |
| 7 | BALCON / BALCONY                | 12'-0" X 6'-0"   |



Toutes les dimensions et superficies indiquées sur les plans sont approximatives et sujettes à modifications sans préavis. All dimensions and areas indicated on the plans are approximate and subject to modification without notice.