

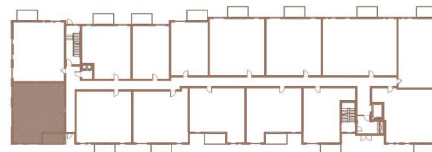
BUILDING 2

310

2 CHAMBRES | 1 SALLE DE BAINS | 885 PI<sup>2</sup>

2 BEDROOMS | 1 BATHROOM | 885 FT<sup>2</sup>

- |   |                                 |                 |
|---|---------------------------------|-----------------|
| 1 | SALON / LIVING ROOM             | 13'-0" X 10'-6" |
| 2 | SALLE À MANGER / DINING ROOM    | 8'-6" X 13'-2"  |
| 3 | CUISINE / KITCHEN               | 8'-3" X 13'-2"  |
| 4 | CHAMBRE À COUCHER 1 / BEDROOM 1 | 12'-3" X 9'-6"  |
| 5 | CHAMBRE À COUCHER 2 / BEDROOM 2 | 9'-10" X 10'-1" |
| 6 | SALLE DE BAINS / BATHROOM       | 6'-7" X 14'-5"  |
| 7 | BUANDERIE / LAUNDRY ROOM        | 5'-3" X 7'-11"  |
| 8 | BALCON / BALCONY                | 12'-0" X 6'-0"  |



Toutes les dimensions et superficies indiquées sur les plans sont approximatives et sujettes à modifications sans préavis.  
All dimensions and areas indicated on the plans are approximate and subject to modification without notice.