

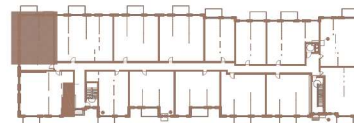
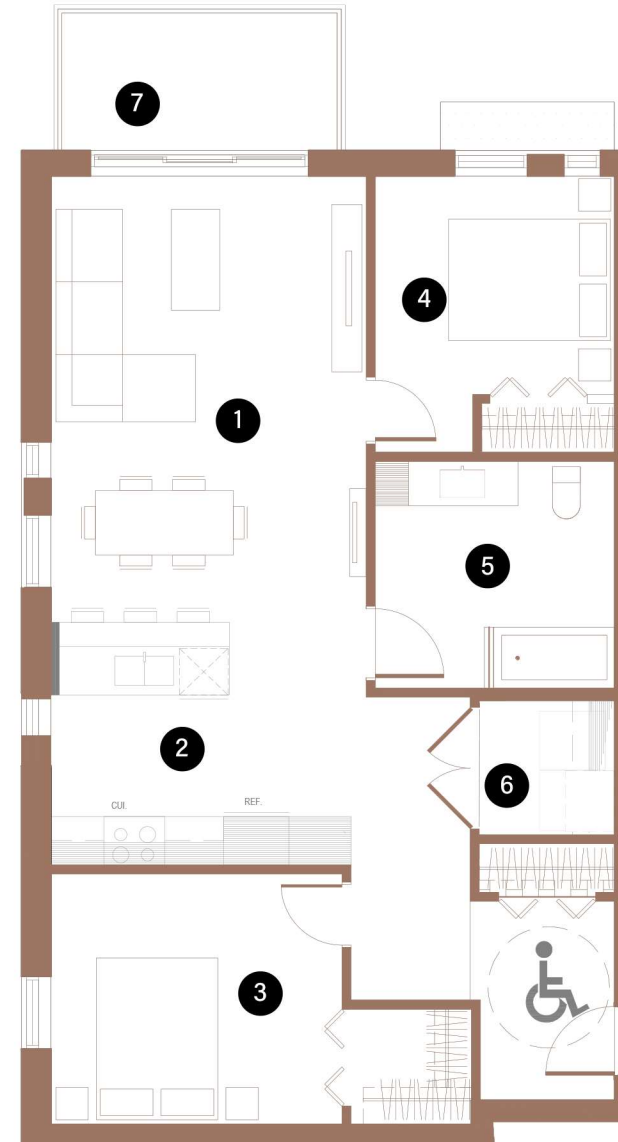
BUILDING 2

302

2 CHAMBRES | 1 SALLE DE BAINS | 900 PI<sup>2</sup>

2 BEDROOMS | 1 BATHROOM | 900 FT<sup>2</sup>

- |   |  |                 |
|---|--|-----------------|
| 1 | SALON / LIVING ROOM<br>SALLE À MANGER/ DINING ROOM | 12'-6" X 18'-4" |
| 2 | CUISINE / KITCHEN                                  | 10'-10" X 8'-9" |
| 3 | CHAMBRE À COUCHER 1 / BEDROOM 1                    | 12'-5" X 12'-0" |
| 4 | CHAMBRE À COUCHER 2 / BEDROOM 2                    | 10'-4" X 9'-0"  |
| 5 | SALLE DE BAINS / BATHROOM                          | 10'-4" X 7'-10" |
| 6 | BUANDERIE / LAUNDRY ROOM                           | 6'-0" X 7'-0"   |
| 7 | BALCON / BALCONY                                   | 12'-0" X 6'-0"  |



Toutes les dimensions et superficies indiquées sur les plans sont approximatives et sujettes à modifications sans préavis. All dimensions and areas indicated on the plans are approximate and subject to modification without notice.