

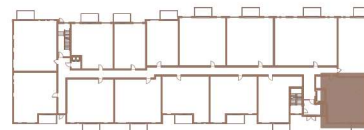
BUILDING 2

**301**

**2 CHAMBRES | 2 SALLES DE BAINS | 944 PI<sup>2</sup>**

**2 BEDROOMS | 2 BATHROOMS | 944 FT<sup>2</sup>**

- |   |  |                  |
|---|--|------------------|
| ① | SALON / LIVING ROOM<br>SALLE À MANGER/ DINING ROOM | 19'-11" X 12'-0" |
| ② | CUISINE / KITCHEN                                  | 10'-6" X 8'-3"   |
| ③ | CHAMBRE À COUCHER 1 / BEDROOM 1                    | 10'-10" X 9'-4"  |
| ④ | SALLE DE BAINS / BATHROOM                          | 8'-8" X 5'-0"    |
| ⑤ | CHAMBRE À COUCHER 2 / BEDROOM 2                    | 9'-0" X 10'-0"   |
| ⑥ | SALLE DE BAINS / BATHROOM                          | 8'-3" X 8'-1"    |
| ⑦ | BUANDERIE / LAUNDRY ROOM                           | 3'-4" X 6'-1"    |
| ⑧ | BALCON / BALCONY                                   | 12'-0" X 6'-0"   |



Toutes les dimensions et superficies indiquées sur les plans sont approximatives et sujettes à modifications sans préavis.  
All dimensions and areas indicated on the plans are approximate and subject to modification without notice.