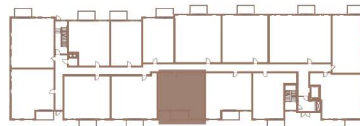


BUILDING 2

213

2 CHAMBRES | 1 SALLE DE BAINS | 838 PI<sup>2</sup>  
2 BEDROOMS | 1 BATHROOM | 838 FT<sup>2</sup>

- |   |                                 |                  |
|---|---------------------------------|------------------|
| 1 | SALON / LIVING ROOM             | 11'-8" X 12'-2"  |
| 2 | SALLE À MANGER / DINING ROOM    | 9'-4" X 8'-9"    |
| 3 | CUISINE / KITCHEN               | 12'-8" X 8'-3"   |
| 4 | CHAMBRE À COUCHER 1 / BEDROOM 1 | 10'-0" X 11'-10" |
| 5 | CHAMBRE À COUCHER 2 / BEDROOM 2 | 8'-10" X 9'-5"   |
| 6 | SALLE DE BAINS / BATHROOM       | 5'-0" X 12'-9"   |
| 7 | BUANDERIE / LAUNDRY ROOM        | 5'-3" X 6'-5"    |
| 8 | BALCON / BALCONY                | 12'-0" X 6'-0"   |



Toutes les dimensions et superficies indiquées sur les plans sont approximatives et sujettes à modifications sans préavis.  
All dimensions and areas indicated on the plans are approximate and subject to modification without notice.