

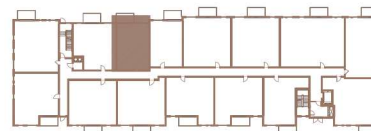
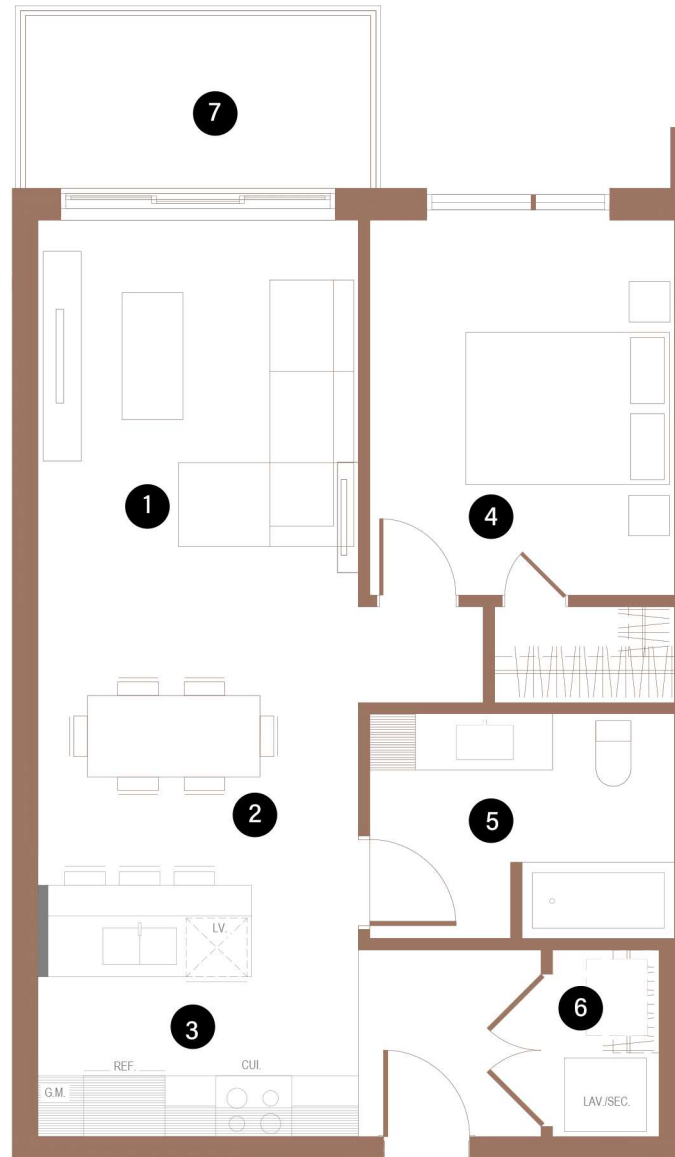
BUILDING 2

207

1 CHAMBRE | 1 SALLE DE BAINS | 628 PI²

1 BEDROOM | 1 BATHROOM | 628 FT²

- | | | |
|---|---------------------------------|-----------------|
| 1 | SALON / LIVING ROOM | 10'-6" X 12'-8" |
| 2 | SALLE À MANGER/ DINING ROOM | 10'-6" X 9'-2" |
| 3 | CUISINE / KITCHEN | 10'-6" X 8'-3" |
| 4 | CHAMBRE À COUCHER 1 / BEDROOM 1 | 10'-0" X 12'-4" |
| 5 | SALLE DE BAINS / BATHROOM | 10'-0" X 5'-0" |
| 6 | BUANDERIE / LAUNDRY ROOM | 3'-4" X 5'-3" |
| 7 | BALCON / BALCONY | 12'-0" X 6'-0" |



Toutes les dimensions et superficies indiquées sur les plans sont approximatives et sujettes à modifications sans préavis. All dimensions and areas indicated on the plans are approximate and subject to modification without notice.