

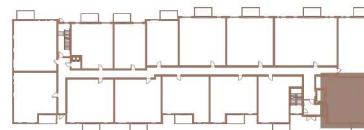
BUILDING 2

201

2 CHAMBRES | 2 SALLES DE BAINS | 944 PI<sup>2</sup>

2 BEDROOMS | 2 BATHROOMS | 944 FT<sup>2</sup>

- |   |  |                  |
|---|--|------------------|
| 1 | SALON / LIVING ROOM<br>SALLE À MANGER/ DINING ROOM | 19'-11" X 12'-0" |
| 2 | CUISINE / KITCHEN                                  | 10'-6" X 8'-3"   |
| 3 | CHAMBRE À COUCHER 1 / BEDROOM 1                    | 10'-10" X 9'-4"  |
| 4 | SALLE DE BAINS / BATHROOM                          | 8'-8" X 5'-0"    |
| 5 | CHAMBRE À COUCHER 2 / BEDROOM 2                    | 9'-0" X 10'-0"   |
| 6 | SALLE DE BAINS / BATHROOM                          | 8'-3" X 8'-1"    |
| 7 | BUANDERIE / LAUNDRY ROOM                           | 3'-4" X 6'-1"    |
| 8 | BALCON / BALCONY                                   | 12'-0" X 6'-0"   |



Toutes les dimensions et superficies indiquées sur les plans sont approximatives et sujettes à modifications sans préavis. All dimensions and areas indicated on the plans are approximate and subject to modification without notice.