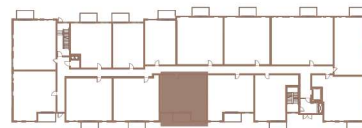


BUILDING 2

113

2 CHAMBRES | 1 SALLE DE BAINS | 838 PI²
2 BEDROOMS | 1 BATHROOM | 838 FT²

- | | | |
|---|---------------------------------|------------------|
| 1 | SALON / LIVING ROOM | 11'-8" X 12'-2" |
| 2 | SALLE À MANGER / DINING ROOM | 9'-4" X 8'-9" |
| 3 | CUISINE / KITCHEN | 12'-8" X 8'-3" |
| 4 | CHAMBRE À COUCHER 1 / BEDROOM 1 | 10'-0" X 11'-10" |
| 5 | CHAMBRE À COUCHER 2 / BEDROOM 2 | 8'-10" X 9'-5" |
| 6 | SALLE DE BAINS / BATHROOM | 5'-0" X 12'-9" |
| 7 | BUANDERIE / LAUNDRY ROOM | 5'-3" X 6'-5" |
| 8 | BALCON / BALCONY | 12'-0" X 6'-0" |



Toutes les dimensions et superficies indiquées sur les plans sont approximatives et sujettes à modifications sans préavis.
All dimensions and areas indicated on the plans are approximate and subject to modification without notice.