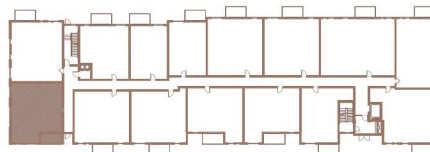


BUILDING 2

110

2 CHAMBRES | 1 SALLE DE BAINS | 885 PI²
2 BEDROOMS | 1 BATHROOM | 885 FT²

- | | | |
|---|---------------------------------|-----------------|
| 1 | SALON / LIVING ROOM | 13'-0" X 10'-6" |
| 2 | SALLE À MANGER / DINING ROOM | 8'-6" X 13'-2" |
| 3 | CUISINE / KITCHEN | 8'-3" X 13'-2" |
| 4 | CHAMBRE À COUCHER 1 / BEDROOM 1 | 12'-3" X 9'-6" |
| 5 | CHAMBRE À COUCHER 2 / BEDROOM 2 | 9'-10" X 10'-1" |
| 6 | SALLE DE BAINS / BATHROOM | 6'-7" X 14'-5" |
| 7 | BUANDERIE / LAUNDRY ROOM | 5'-3" X 7'-11" |
| 8 | BALCON / BALCONY | 12'-0" X 6'-0" |



Toutes les dimensions et superficies indiquées sur les plans sont approximatives et sujettes à modifications sans préavis.
All dimensions and areas indicated on the plans are approximate and subject to modification without notice.