

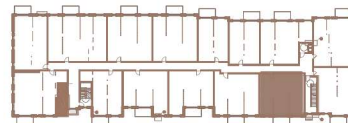
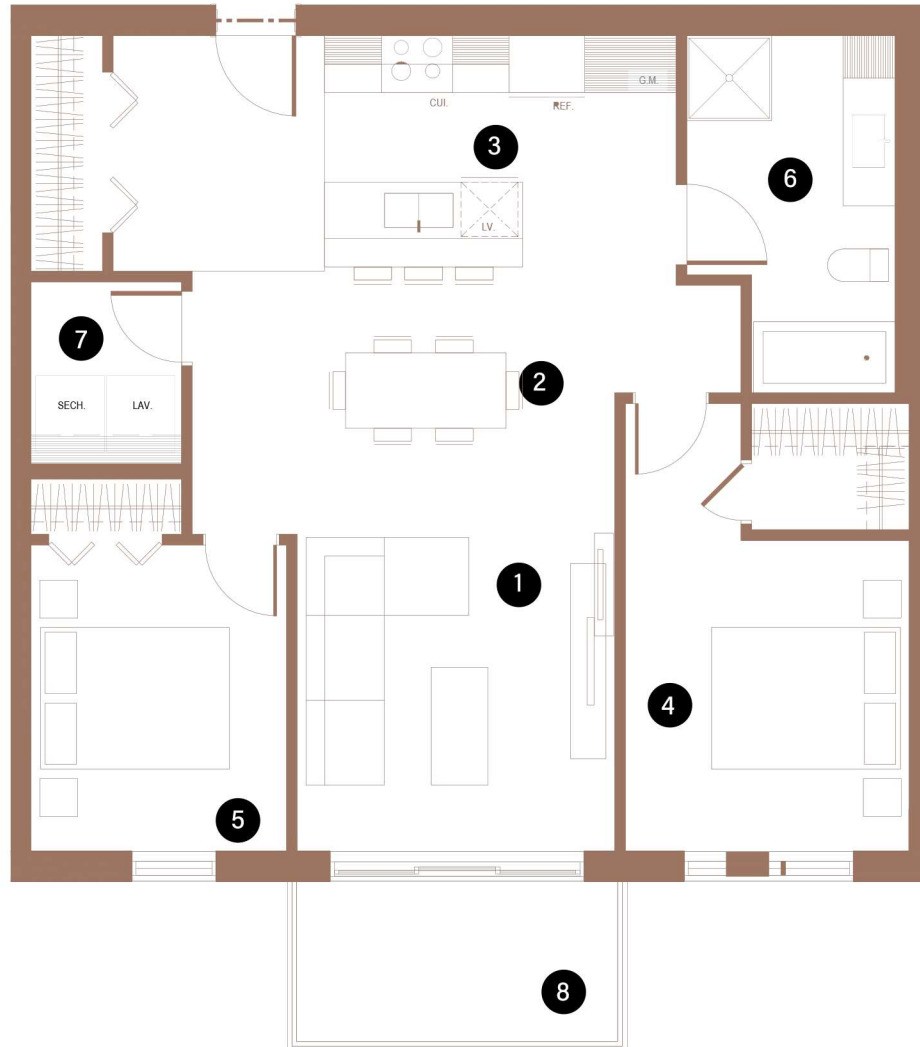
BUILDING 1

311

2 CHAMBRES | 1 SALLE DE BAINS | 898 PI²

2 BEDROOMS | 1 BATHROOM | 898 FT²

- | | | |
|---|---------------------------------|-----------------|
| 1 | SALON / LIVING ROOM | 11'-3" X 11'-2" |
| 2 | SALLE À MANGER / DINING ROOM | 15'-0" X 9'-7" |
| 3 | CUISINE / KITCHEN | 12'-5" X 8'-2" |
| 4 | CHAMBRE À COUCHER 1 / BEDROOM 1 | 10'-0" X 11'-0" |
| 5 | CHAMBRE À COUCHER 2 / BEDROOM 2 | 9'-0" X 10'-10" |
| 6 | SALLE DE BAINS / BATHROOM | 7'-4" X 12'-7" |
| 7 | BUANDERIE / LAUNDRY ROOM | 5'-3" X 6'-5" |
| 8 | BALCON / BALCONY | 12'-0" X 6'-0" |



Toutes les dimensions et superficies indiquées sur les plans sont approximatives et sujettes à modifications sans préavis.
All dimensions and areas indicated on the plans are approximate and subject to modification without notice.