

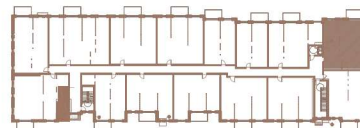
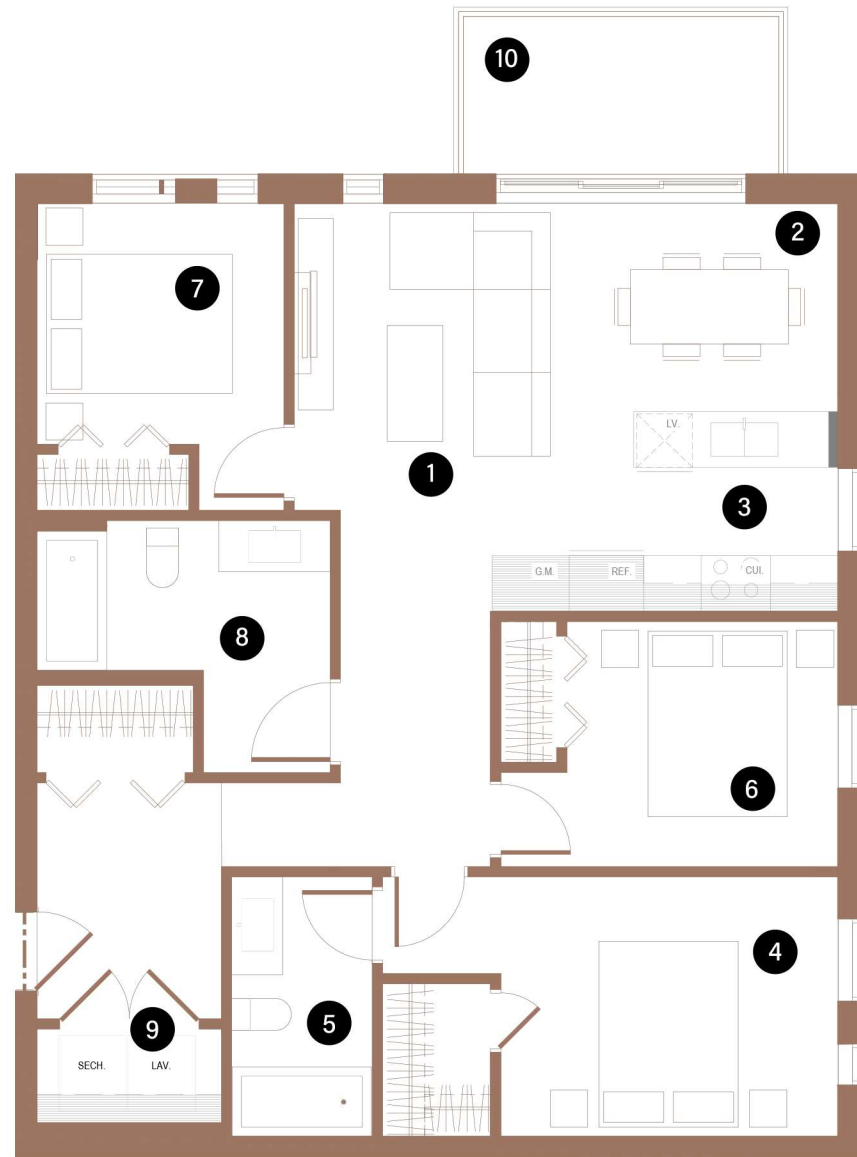
BUILDING 1

309

3 CHAMBRES | 2 SALLES DE BAINS | 963 PI²

3 BEDROOMS | 2 BATHROOMS | 963 FT²

- | | | |
|----|---------------------------------|----------------|
| 1 | SALON / LIVING ROOM | 9'-7" X 9'-5" |
| 2 | SALLE A MANGER / DINING ROOM | 10'-0" X 7'-5" |
| 3 | CUISINE / KITCHEN | 12'-5" X 8'-3" |
| 4 | CHAMBRE À COUCHER 1 / BEDROOM 1 | 12'-2" X 9'-4" |
| 5 | SALLE DE BAINS / BATHROOM | 5'-0" X 9'-4" |
| 6 | CHAMBRE À COUCHER 2 / BEDROOM 2 | 9'-8" X 8'-10" |
| 7 | CHAMBRE À COUCHER 3 / BEDROOM 3 | 8'-10" X 8'-8" |
| 8 | SALLE DE BAINS / BATHROOM | 10'-6" X 5'-4" |
| 9 | BUANDERIE / LAUNDRY ROOM | 6'-7" X 3'-4" |
| 10 | BALCON / BALCONY | 12'-0" X 6'-0" |



Toutes les dimensions et superficies indiquées sur les plans sont approximatives et sujettes à modifications sans préavis.
All dimensions and areas indicated on the plans are approximate and subject to modification without notice.