

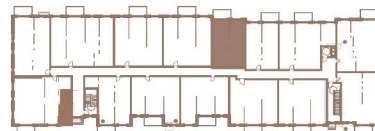
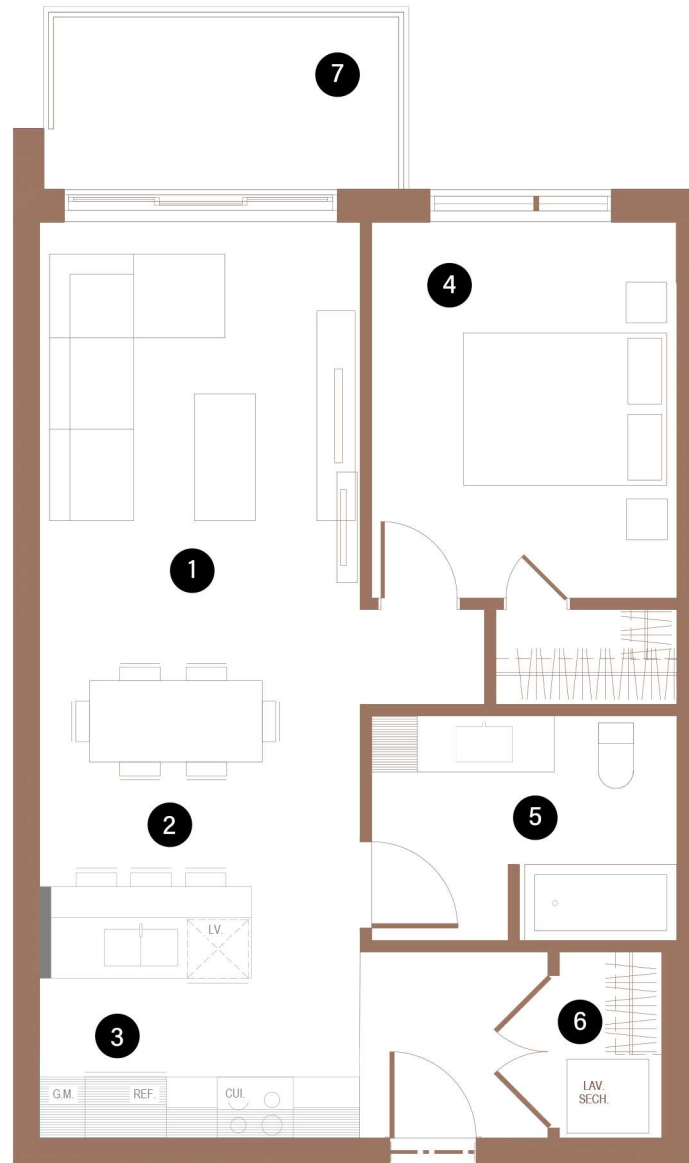
BUILDING 1

306

1 CHAMBRE | 1 SALLE DE BAINS | 629 PI<sup>2</sup>

1 BEDROOM | 1 BATHROOM | 629 FT<sup>2</sup>

- |   |                                 |                 |
|---|---------------------------------|-----------------|
| 1 | SALON / LIVING ROOM             | 10'-6" X 12'-8" |
| 2 | SALLE À MANGER/ DINING ROOM     | 10'-6" X 9'-2"  |
| 3 | CUISINE / KITCHEN               | 10'-6" X 8'-3"  |
| 4 | CHAMBRE À COUCHER 1 / BEDROOM 1 | 10'-1" X 12'-4" |
| 5 | SALLE DE BAINS / BATHROOM       | 10'-1" X 5'-0"  |
| 6 | BUANDERIE / LAUNDRY ROOM        | 3'-4" X 5'-3"   |
| 7 | BALCON / BALCONY                | 12'-0" X 6'-0"  |



Toutes les dimensions et superficies indiquées sur les plans sont approximatives et sujettes à modifications sans préavis.  
All dimensions and areas indicated on the plans are approximate and subject to modification without notice.