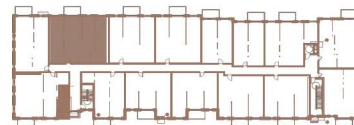


BUILDING 1

303

3 CHAMBRES | 2 SALLES DE BAINS | 1308 PI²
3 BEDROOMS | 2 BATHROOMS | 1308 FT²

- | | | |
|----|---------------------------------|-----------------|
| 1 | SALON / LIVING ROOM | 12'-0" X 11'-8" |
| 2 | SALLE À MANGER/ DINING ROOM | 12'-0" X 11'-6" |
| 3 | CUISINE / KITCHEN | 12'-7" X 9'-0" |
| 4 | CHAMBRE À COUCHER 1 / BEDROOM 1 | 9'-9" X 12'-0" |
| 5 | SALLE DE BAINS / BATHROOM | 5'-0" X 9'-0" |
| 6 | CHAMBRE À COUCHER 2 / BEDROOM 2 | 8'-9" X 10'-8" |
| 7 | CHAMBRE À COUCHER 3 / BEDROOM 3 | 9'-1" X 10'-8" |
| 8 | SALLE DE BAINS / BATHROOM | 9'-1" X 9'-0" |
| 9 | BUANDERIE / LAUNDRY ROOM | 6'-10" X 5'-10" |
| 10 | BALCON / BALCONY | 12'-0" X 6'-0" |



Toutes les dimensions et superficies indiquées sur les plans sont approximatives et sujettes à modifications sans préavis.
All dimensions and areas indicated on the plans are approximate and subject to modification without notice.