

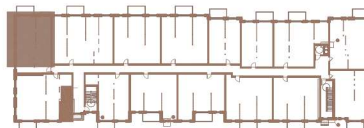
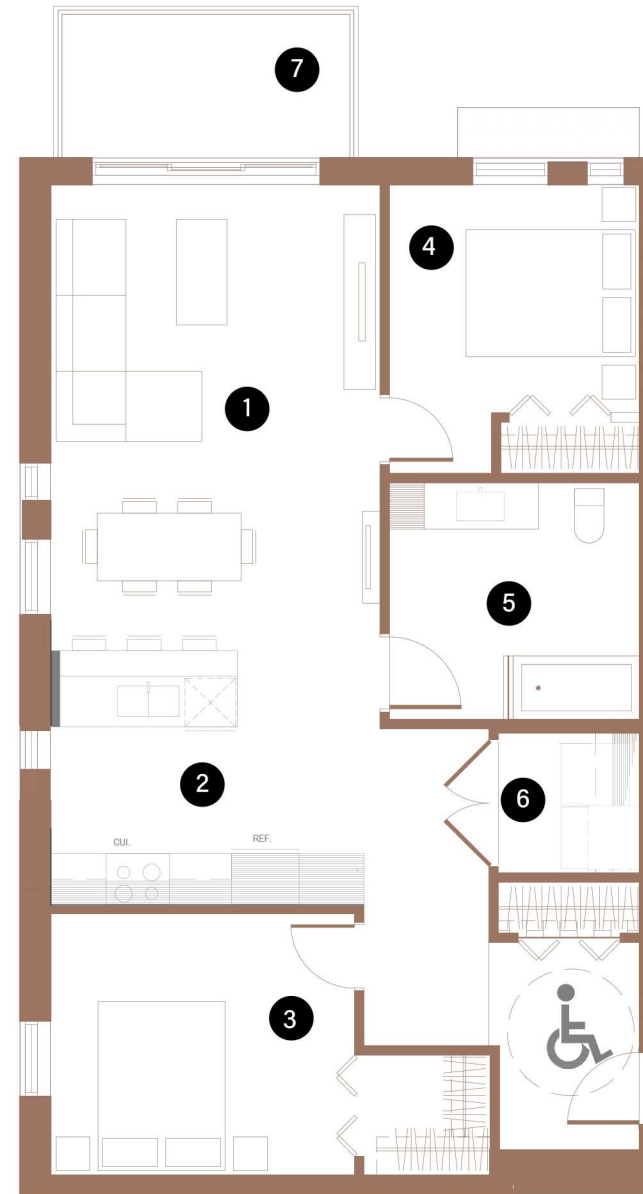
BUILDING 1

302

2 CHAMBRES | 1 SALLE DE BAINS | 900 PI²

2 BEDROOMS | 1 BATHROOM | 900 FT²

- | | | |
|---|--|-----------------|
| 1 | SALON / LIVING ROOM
SALLE À MANGER/ DINING ROOM | 12'-6" X 18'-4" |
| 2 | CUISINE / KITCHEN | 12'-10" X 8'-9" |
| 3 | CHAMBRE À COUCHER 1 / BEDROOM 1 | 12'-5" X 12'-0" |
| 4 | CHAMBRE À COUCHER 2 / BEDROOM 2 | 10'-4" X 9'-0" |
| 5 | SALLE DE BAINS / BATHROOM | 10'-4" X 7'-10" |
| 6 | BUANDERIE / LAUNDRY ROOM | 6'-0" X 7'-0" |
| 7 | BALCON / BALCONY | 12'-0" X 6'-0" |



Toutes les dimensions et superficies indiquées sur les plans sont approximatives et sujettes à modifications sans préavis. All dimensions and areas indicated on the plans are approximate and subject to modification without notice.