

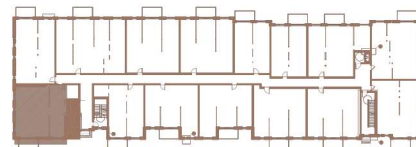
BUILDING 1

301

2 CHAMBRES | 2 SALLES DE BAINS | 960 PI²

2 BEDROOMS | 2 BATHROOMS | 960 FT²

- | | | |
|---|----------------------------------------------------|------------------|
| 1 | SALON / LIVING ROOM SALLE À MANGER/ DINING ROOM | 19'-11" X 12'-0" |
| 2 | CUISINE / KITCHEN | 10'-6" X 8'-3" |
| 3 | CHAMBRE À COUCHER 1 / BEDROOM 1 | 10'-10" X 9'-4" |
| 4 | SALLE DE BAINS / BATHROOM | 8'-8" X 5'-0" |
| 5 | CHAMBRE À COUCHER 2 / BEDROOM 2 | 9'-0" X 10'-0" |
| 6 | SALLE DE BAINS / BATHROOM | 8'-0" X 8'-1" |
| 7 | BUANDERIE / LAUNDRY ROOM | 3'-3" X 6'-0" |
| 8 | BALCON / BALCONY | 12'-0" X 6'-0" |



Toutes les dimensions et superficies indiquées sur les plans sont approximatives et sujettes à modifications sans préavis. All dimensions and areas indicated on the plans are approximate and subject to modification without notice.