

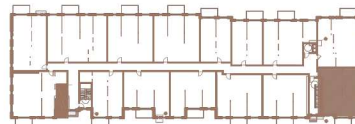
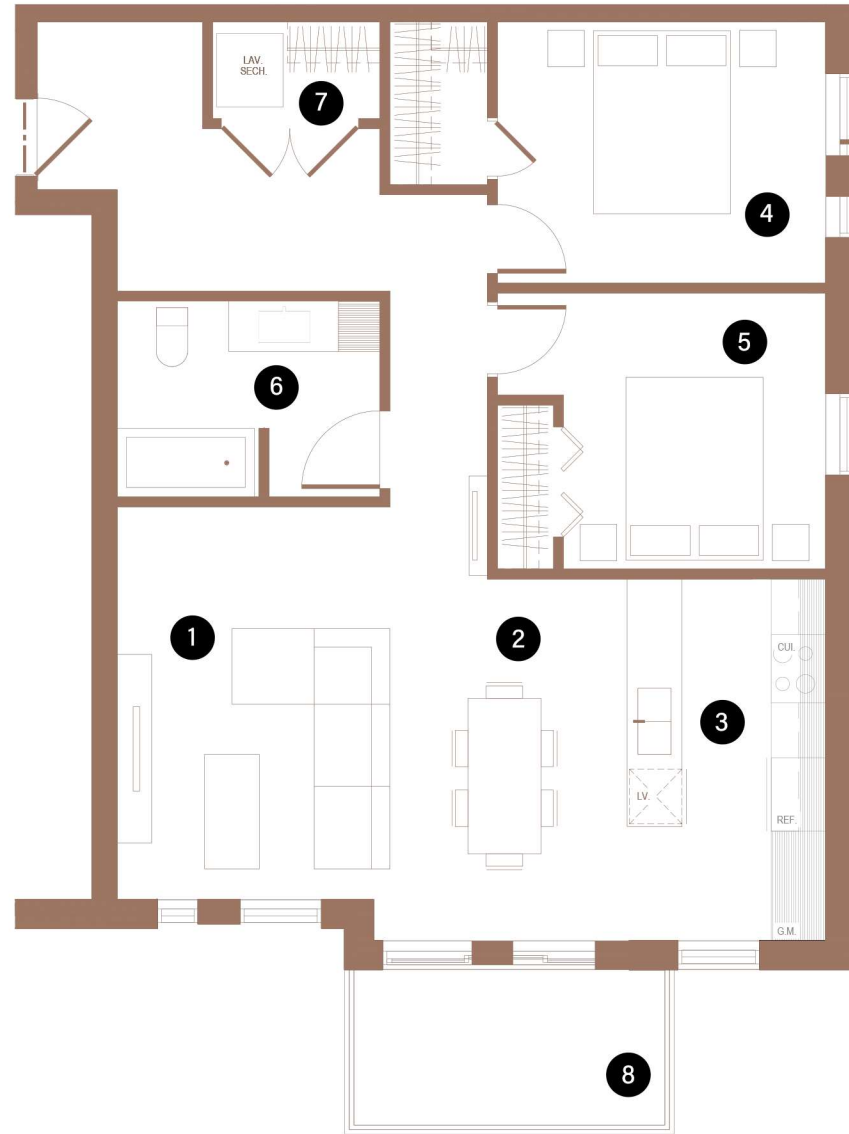
BUILDING 1

# 210

2 CHAMBRES | 1 SALLE DE BAINS | 869 PI<sup>2</sup>

2 BEDROOMS | 1 BATHROOM | 869 FT<sup>2</sup>

- |   |                                 |                 |
|---|---------------------------------|-----------------|
| 1 | SALON / LIVING ROOM             | 9'-10" X 14'-3" |
| 2 | SALLE À MANGER / DINING ROOM    | 8'-6" X 13'-2"  |
| 3 | CUISINE / KITCHEN               | 7'-3" X 13'-2"  |
| 4 | CHAMBRE À COUCHER 1 / BEDROOM 1 | 12'-0" X 9'-6"  |
| 5 | CHAMBRE À COUCHER 2 / BEDROOM 2 | 9'-7" X 10'-0"  |
| 6 | SALLE DE BAINS / BATHROOM       | 9'-6" X 7'-1"   |
| 7 | BUANDERIE / LAUNDRY ROOM        | 3'-7" X 6'-1"   |
| 8 | BALCON / BALCONY                | 12'-0" X 6'-0"  |



Toutes les dimensions et superficies indiquées sur les plans sont approximatives et sujettes à modifications sans préavis. All dimensions and areas indicated on the plans are approximate and subject to modification without notice.