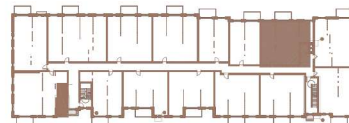


BUILDING 1

208

2 CHAMBRES | 1 SALLE DE BAINS | 949 PI<sup>2</sup>  
2 BEDROOMS | 1 BATHROOM | 949 FT<sup>2</sup>

- |   |                                 |                 |
|---|---------------------------------|-----------------|
| 1 | SALON / LIVING ROOM             | 16'-4" X 14'-8" |
| 2 | SALLE À MANGER / DINING ROOM    | 16'-4" X 9'-2"  |
| 3 | CUISINE / KITCHEN               | 10'-6" X 8'-3"  |
| 4 | CHAMBRE À COUCHER 1 / BEDROOM 1 | 10'-0" X 12'-4" |
| 5 | CHAMBRE À COUCHER 2 / BEDROOM 2 | 9'-6" X 12'-3"  |
| 6 | SALLE DE BAINS / BATHROOM       | 10'-0" X 7'-4"  |
| 7 | BUANDERIE / LAUNDRY ROOM        | 5'-4" X 7'-6"   |
| 8 | BALCON / BALCONY                | 12'-0" X 6'-0"  |



Toutes les dimensions et superficies indiquées sur les plans sont approximatives et sujettes à modifications sans préavis. All dimensions and areas indicated on the plans are approximate and subject to modification without notice.