

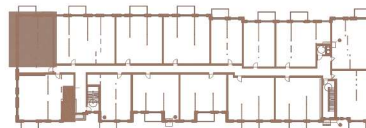
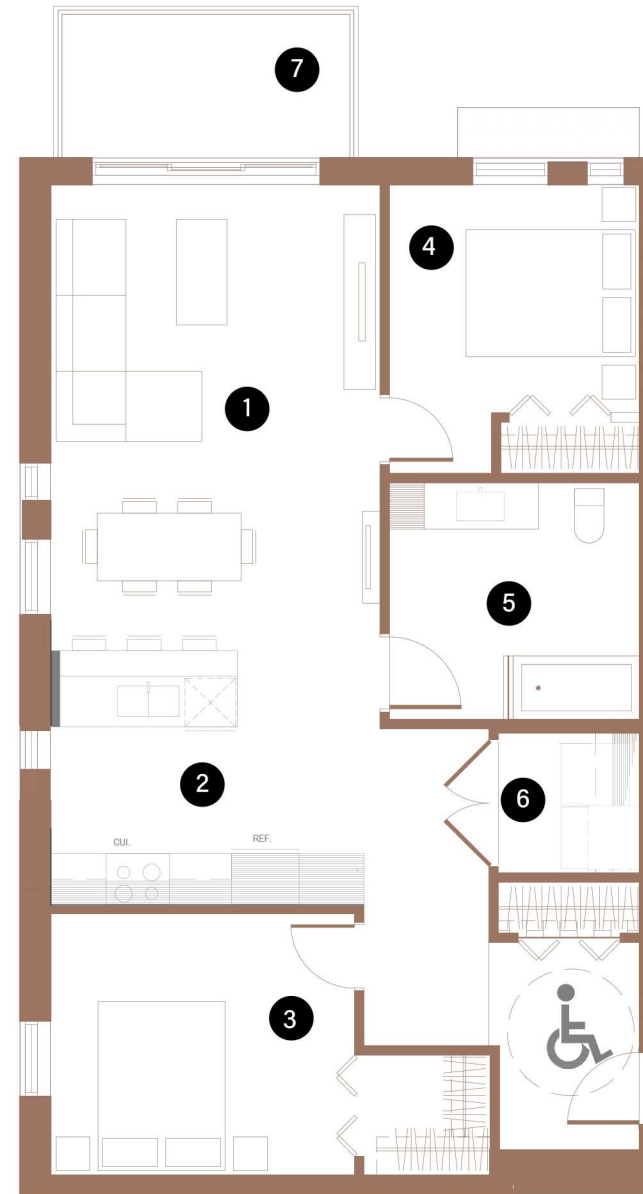
BUILDING 1

202

2 CHAMBRES | 1 SALLE DE BAINS | 900 PI<sup>2</sup>

2 BEDROOMS | 1 BATHROOM | 900 FT<sup>2</sup>

- 1 SALON / LIVING ROOM  
SALLE À MANGER/ DINING ROOM 12'-6" X 18'-4"
- 2 CUISINE / KITCHEN 12'-10" X 8'-9"
- 3 CHAMBRE À COUCHER 1 / BEDROOM 1 12'-5" X 12'-0"
- 4 CHAMBRE À COUCHER 2 / BEDROOM 2 10'-4" X 9'-0"
- 5 SALLE DE BAINS / BATHROOM 10'-4" X 7'-10"
- 6 BUANDERIE / LAUNDRY ROOM 6'-0" X 7'-0"
- 7 BALCON / BALCONY 12'-0" X 6'-0"



Toutes les dimensions et superficies indiquées sur les plans sont approximatives et sujettes à modifications sans préavis. All dimensions and areas indicated on the plans are approximate and subject to modification without notice.