

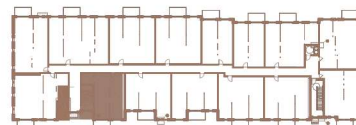
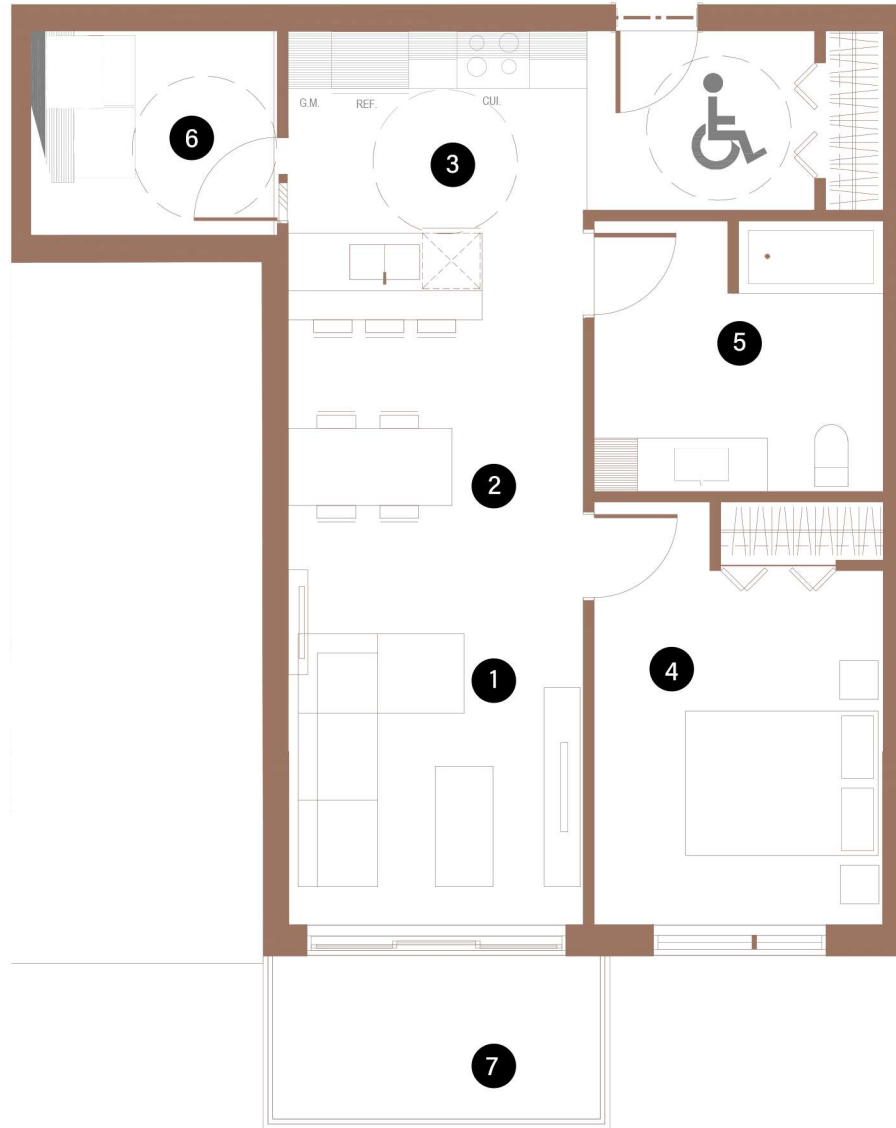
BUILDING 1

115

1 CHAMBRE | 1 SALLE DE BAINS | 700 PI<sup>2</sup>

1 BEDROOM | 1 BATHROOM | 700 FT<sup>2</sup>

- 1 SALON / LIVING ROOM 10'-3" X 11'-11"
- 2 SALLE À MANGER / DINING ROOM 10'-3" X 10'-10"
- 3 CUISINE / KITCHEN 10'-4" X 8'-3"
- 4 CHAMBRE À COUCHER 1 / BEDROOM 1 10'-0" X 13'-1"
- 5 SALLE DE BAINS / BATHROOM 10'-0" X 7'-5"
- 6 BUANDERIE / LAUNDRY ROOM 8'-1" X 7'-1"
- 7 BALCON / BALCONY 12'-0" X 6'-0"



Toutes les dimensions et superficies indiquées sur les plans sont approximatives et sujettes à modifications sans préavis. All dimensions and areas indicated on the plans are approximate and subject to modification without notice.