

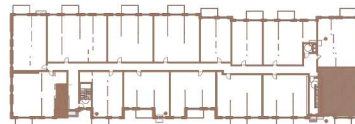
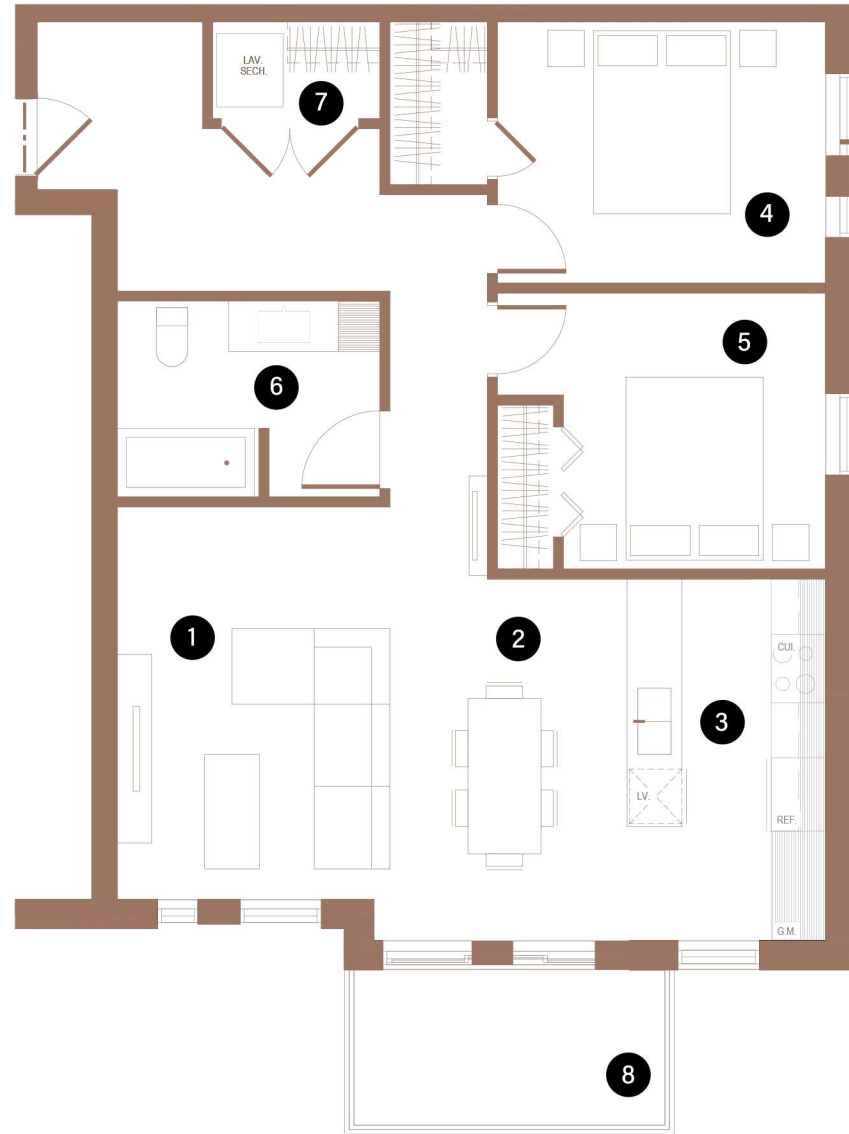
BUILDING 1

110

2 CHAMBRES | 1 SALLE DE BAINS | 869 PI²

2 BEDROOMS | 1 BATHROOM | 869 FT²

- | | | |
|---|---------------------------------|-----------------|
| 1 | SALON / LIVING ROOM | 9'-10" X 14'-3" |
| 2 | SALLE À MANGER / DINING ROOM | 8'-6" X 13'-2" |
| 3 | CUISINE / KITCHEN | 7'-3" X 13'-2" |
| 4 | CHAMBRE À COUCHER 1 / BEDROOM 1 | 12'-0" X 9'-6" |
| 5 | CHAMBRE À COUCHER 2 / BEDROOM 2 | 9'-7" X 10'-0" |
| 6 | SALLE DE BAINS / BATHROOM | 9'-6" X 7'-1" |
| 7 | BUANDERIE / LAUNDRY ROOM | 3'-7" X 6'-1" |
| 8 | BALCON / BALCONY | 12'-0" X 6'-0" |



Toutes les dimensions et superficies indiquées sur les plans sont approximatives et sujettes à modifications sans préavis. All dimensions and areas indicated on the plans are approximate and subject to modification without notice.