

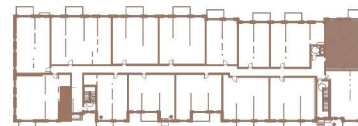
BUILDING 1

# 109

**3 CHAMBRES | 2 SALLES DE BAINS | 963 PI<sup>2</sup>**

**3 BEDROOMS | 2 BATHROOMS | 963 FT<sup>2</sup>**

- |           |                                 |                |
|-----------|---------------------------------|----------------|
| <b>1</b>  | SALON / LIVING ROOM             | 9'-7" X 9'-5"  |
| <b>2</b>  | SALLE A MANGER / DINING ROOM    | 10'-0" X 7'-5" |
| <b>3</b>  | CUISINE / KITCHEN               | 12'-5" X 8'-3" |
| <b>4</b>  | CHAMBRE À COUCHER 1 / BEDROOM 1 | 12'-2" X 9'-4" |
| <b>5</b>  | SALLE DE BAINS / BATHROOM       | 5'-0" X 9'-4"  |
| <b>6</b>  | CHAMBRE À COUCHER 2 / BEDROOM 2 | 9'-8" X 8'-10" |
| <b>7</b>  | CHAMBRE À COUCHER 3 / BEDROOM 3 | 8'-10" X 8'-8" |
| <b>8</b>  | SALLE DE BAINS / BATHROOM       | 10'-6" X 5'-4" |
| <b>9</b>  | BUANDERIE / LAUNDRY ROOM        | 6'-7" X 3'-4"  |
| <b>10</b> | BALCON / BALCONY                | 12'-0" X 6'-0" |



Toutes les dimensions et superficies indiquées sur les plans sont approximatives et sujettes à modifications sans préavis.  
All dimensions and areas indicated on the plans are approximate and subject to modification without notice.